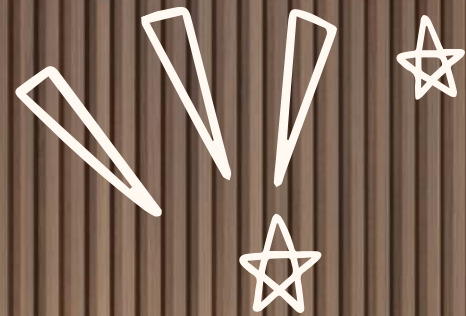


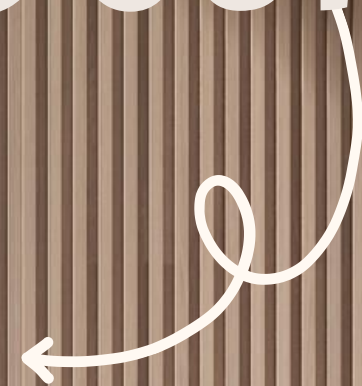


INDIAN SCHOOL AL WADI AL KABIR



DEPT. OF COMPUTER SCIENCE

GRADE IV



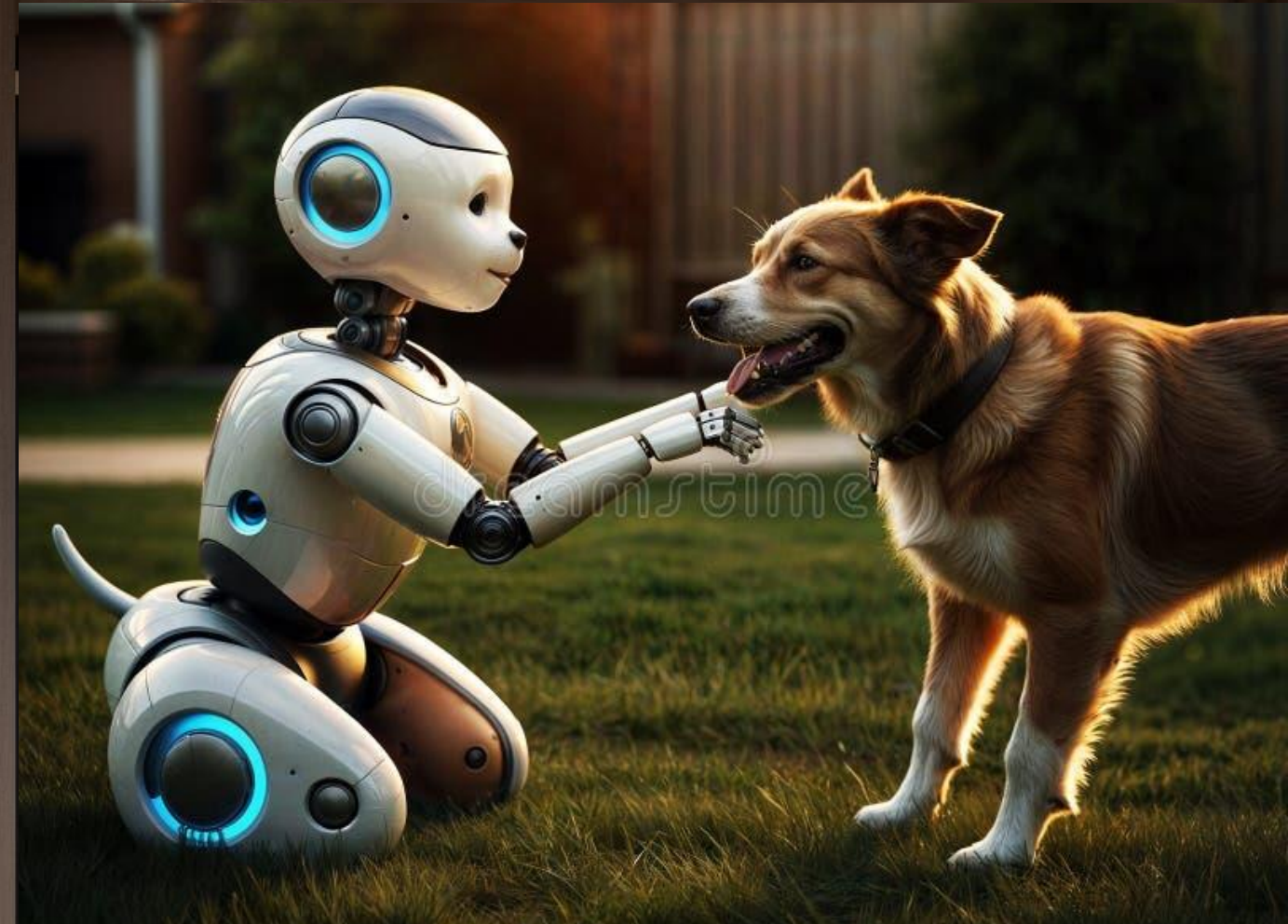
2025-2026



CHAPTER - 9

AI & NON-AI ROBOTS

Prepared by Nandini Sathish



• LET'S RECAP ▶ •



Technology Literacy

Write the difference between both types of phones with the help of given images?



Basic options

Looks Simple

Basic Screen

Takes normal photos

Low cost



Advanced options

Looks Smart

Touch screen

Takes high quality photos

High cost

As there are two types of phones, similarly there are two types of robots. In this chapter we'll learn about them.



QUEST



Technology Literacy
Information Literacy

Guess the following and write their names:

1. A robotic dog
2. Most famous social humanoid
3. Disaster relief robot
4. Space rover from NASA
5. Multilingual humanoid robot

Aibo

Sophia

E2-DR

NASA Puffer

Humanoid Shalu



A. Write one use of the following robots:

1. Cobots **Lighting : Assemble lights, fix tiny parts and check their work properly.**
2. Industrial Robots **Painting : Use spray paint evenly for cars and furniture.**
3. Agriculture Robots **Robots use special arms and cameras to find ripe strawberries and pick gently.**

B. Give two major difference between AI and non AI robots.

- AI –**
1. A Robot which can think, sense and calculate their reaction accordingly.
 2. Learn from experiences
- Non-AI –**
1. The Robot which works automatically but have no intelligence and no ability to sense.
 2. Needs human support

EXERCISE

Page 100 & 101

A. Tick (✓) the correct option.

1. E2-DR is a _____ robot.

(i) pet

☐

(ii) domestic

☐

(iii) disaster relief

☒

(iv) agriculture

☐

2. Which of the following is the first humanoid to receive citizenship in Saudi Arabia?

(i) Sophia

☒

(ii) Kuri

☐

(iii) Rashmi

☐

(iv) Shalu

☐

3. Which of the following is the world's first Hindi-speaking humanoid?

(i) Shalu

☐

(ii) Rashmi

☒

(iii) Manav

☐

(iv) Sophia

☐

4. Shalu is a _____ humanoid.

(i) multilingual

☒

(ii) domestic

☐

(iii) industrial

☐

(iv) non-AI

☐

B. Fill in the blanks using the words given below.

★ Snake ★ Manav ★ Intelligent ★ Collaborative

1. Kuri is also known as an Intelligent robot.
2. Cobots are also called Collaborative robots.
3. Manav is India's first 3D-printed human robot.
4. Snake robot has a fixed tail on one end and the other end has a camera.

C. State whether these statements are true or false.

1. Aibo is a robotic dog.

True

2. Puffer is a space astronaut from NASA.

False

3. Agriculture robots can be used for welding and product inspection.

False

4. All the robots are artificially intelligent.

False

5. Cobots cannot work with humans.

False

D. Answer the following questions:

Page 101

1. Write the names of any three AI robots.

a. Kuri b. Sophia c. Aibo

2. What are Cobots? Where they can be used?

Cobots are called collaborative robots.

They are used by manufacturers of lighting, mobile phones etc.

3. What is the difference between industrial and agricultural robots?

Industrial robots are used in welding, painting, product inspection and testing. Agricultural robots are used in weed control, cloud seeding, planting seeds and soil analysis.



FUN ZONE



Critical Thinking
Technology Literacy

Identify the robots and write their names:



1. Humanoid
Shalu



2. Sophia



3. Kuri



4. Aibo

Competency-based/Application-based questions



Experiential Learning
Information Literacy

1. Manav's father is ill, and his crops are about to ripen. They need to harvest it on time; otherwise, the crop will go to waste. You are Manav's friend; what type of robot will you tell Manav that will help him harvest his crop?
2. Recently, there was an earthquake in Kathmandu, which caused a lot of damage. After the earthquake, many people were trapped and had to come out safely from the earthquake debris. Which robot will be effective in such a situation? Write the name of the robot that you will suggest to the disaster management team.

Agriculture Robots

The Snake Robot can move through narrow spaces and save trapped people.